



depsyn



Christopher H. Johnson
Portfolio



t.o.u.c.h. samadhi
wake up to the trance dance experience



The Traveling Bonfires & Touch Samadhi presents:

DOWNTOWN GETDOWN

**BONFIRES
FOR PEACE**
at Pritchard Park
(Year 4, Event 3)

August 18, 2007
Saturday, 4 to 10pm
Pritchard Park,
downtown Asheville NC - FREE
(tips and donations are blessed)

Featuring
Kri - Nod - Tempest

COMING UP:
DIWATA Womenfest: A Third World Asheville Family Gathering—Aug 25

For more info, www.indieasheville.com or call Marta Osborne at 828
505 0476 or email Pasckie Pascua at raindance60@hotmail.com

The Traveling Bonfires roam the country, instigating arts
and music events and bringing people together.

atmosphere records and the better beats bureau present:

Freddy Fresh

saturday july 30, 2005 - bale chere weekend
asheville, nc



EVERY MONDAY NIGHT @ STELLA BLUE 31 PATTON AVE. DOWNTOWN ASHEVILLE NC
 SPONSORED BY (ATMOSPHERE MUSIC)
 AND BROUGHT TO YOU BY DIRECT PLAY / HUSTLE BAY AND STELLA BLUE

**V
I
P**

ALL ACCESS

MONDAYS

blue

Presented by Direct Play and Hustle Bay
 Stella Blue / Friday June 11th, 2004

RAVE & RAVE

A Celebration of Free Speech
 PRESENTS

Phase II: **"The Movement"**
 8pm @ the wedge gallery 129 Roberts St. - River District

3/5/05
 \$10 recommended donation

COMMUNITY

CatScratch Productions - HiJinx Productions
 T.O.U.C.H. Samadhi - EarthTone Soundsystem
 Full Moon Gathering - Atmosphere Records
 Better Beats Bureau - Hunab Crew/Fresh Tricks
 Eye for an Iris - Stephanie's ID - ReCyclone Fashions
 Mingle - The Writers' Block - LED Consulting
 Collapseable Studios - Analogue Alchemy

MAP
 Creative Commons
 Arts2People
 Catalyst
 Empowerment through the Arts
 ACLU
 m@in
 American Legion

August 28th 2004 - Shady's asheville nc

There is no going to the light without going through the darkness first.

εσοτηρικη νεφαντος

People are like stained-glass windows; they sparkle and shine when the sun is out, but when the darkness sets in, their true beauty is revealed only if there is a light within.

oia

www.outinasheville.com

NEWS, THOUGHT
AND LIFESTYLES
FOR THE LGBTQ
CAROLINAS



April 2007

out in
asheville

oia

www.outinasheville.com

NEWS, THOUGHT
AND LIFESTYLES
FOR THE GLBT
CAROLINAS

December 2005

An illustration of two women with long hair, one with brown hair and green eyes, the other with black hair and brown eyes, both smiling and holding martini glasses. They are positioned in front of a city skyline at night. A lit candle is on a table in front of them. The background is dark blue with white stars.

**GAY...
...BONICS**
P.9

THE LAYENDAR LANGUAGE

Action! Filmmaking in NC... p.3
What About Those Announcements?... p.12
Brokeback Mountain... p.33

**AGELESS ACUPUNCTURE
AND ORIENTAL MEDICINE**



**longevity, youthfulness, health, and
where age has no boundaries**

**Natalie M. Allard
Licensed Acupuncturist
and Herbalist**

**828-275-6816
www.namasteasheville.com
natcatallard@yahoo.com**



Rebecca Vann
Clinical Herbalist, Ayurvedic Postpartum Doula

828.301.0199  herbalhealer33@yahoo.com



AGELESS ACUPUNCTURE AND ORIENTAL MEDICINE
longevity, youthfulness, health, and where age has no boundaries

16525 Sherman Way C11, Van Nuys, CA 91406

1-866-259-7435

ElectroPods Color Changing LED Accent Lights

ElectroPods are designed to add extra style to a motorcycle and make it more visible at night by taking advantage of the latest in LED accent lighting technology. Each ElectroPod contains 6 ultra-bright color changing LEDs that shift hues from red to green to blue and creating a soft color wash effect. The LEDs are housed in a shock and weather resistant chrome casing. The ElectroPods mount easily to highlight physical features of a motorcycle with a brilliant glow, such as the engine, fairing, gas tank, or anywhere you can imagine.

- Package Includes:
- 2 Color Changing LED ElectroPods with Chrome Casing
 - On/Off Switch
 - 1 Fuse Holder with Fuse
 - Industrial Double-sided Adhesive Tape
 - Mounting Brackets
 - 2 Cable Ties
 - Installation Instructions

Dimensions:
1-1/2"L x 1/2"W x 7/8"D



Color Changing ElectroPods

1041907-CCP
MSRP \$24.99



*Please note - Colors may vary slightly from images shown.

ElectroPods LED Accent Light Pods

These Motorcycle LED Light ElectroPods are the brightest LEDs on the market and will add the perfect glow to a motorcycle.

ElectroPods are designed to add extra style to a motorcycle and make it more visible at night by taking advantage of the latest in LED accent lighting technology. Each oval ElectroPod contains 6 ultra-bright LEDs that are housed in a shock and weather resistant black or chrome casing. The ElectroPods mount easily to highlight physical features of a motorcycle with a brilliant glow, such as the engine, fairing, gas tank, or anywhere you can imagine.

- Package Includes:
- 2 LED Oval ElectroPods with Black or Chrome Casing
 - On/Off Switch
 - 1 Fuse Holder with Fuse
 - Industrial Double-sided Adhesive Tape
 - Mounting Brackets
 - 2 Cable Ties
 - Installation Instructions

Black Casing

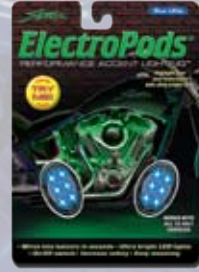
BLUE	1042518-BPB
GREEN	1042519-GPB
ORANGE	1042521-OPB
PURPLE	1042520-PPB
RED	1042517-RPB
WHITE	1042522-WPB

Chrome Casing

BLUE	1041902-BPC
GREEN	1041903-GPC
ORANGE	1041904-OPC
PURPLE	1041905-PPC
RED	1041901-RPC
WHITE	1043284-WPC

Dimensions:
Oval ElectroPods - 1-1/2"L x 1"W x 1/2"D

MSRP \$19.99



*Please note - Colors may vary slightly from images shown.

ElectroPods LED Accent Lighting Kits

This Kit includes everything needed to add that extra style to a motorcycle. The LEDs in this kit are the brightest LEDs on the market and will add the perfect glow to a motorcycle.

These easy-to-install kits include everything needed to enhance and add extra style to a motorcycle, as well as make it more visible at night. The ElectroPods LED Motorcycle Accent Lighting Kit comes with 6 LED Oval ElectroPods that each contain 6 ultra-bright LEDs, plus 2 - 7" LED Light Strips that each contain 6 ultra-bright LEDs. Both the Oval ElectroPods and Light Strips are finished with a shock and weather resistant Black or Chrome casing. This kit also includes an on/off switch, all necessary mounting and wiring accessories, and easy-to-follow installation instructions.

- Package Includes:
- 6 LED Oval ElectroPods with Black or Chrome Casing
 - 2 - 7" LED Light Strips
 - On/Off Switch
 - 1 Fuse Holder with Fuse
 - Industrial Double-sided Adhesive Tape
 - Mounting Brackets
 - 4 Screws
 - 2 Cable Ties

Black Casing

BLUE	1042187-BKB
GREEN	1042465-GKB
ORANGE	1042488-OKB
PURPLE	1042188-PKB
RED	1042186-RKB
WHITE	1042516-WKB

Chrome Casing

BLUE	1042434-BKC
GREEN	1042462-GKC
ORANGE	1042463-OKC
PURPLE	1042435-PKC
RED	1042433-RKC
WHITE	1042515-WKC

Dimensions:
Oval ElectroPods - 1-1/2"L x 1"W x 1/2"D
Light Strips - 7"L x 1/2"W x 1/2"D

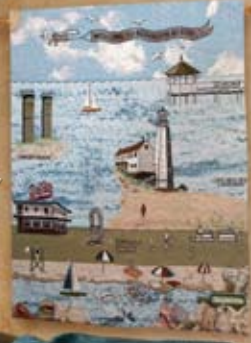
MSRP \$79.99



*Please note - Colors may vary slightly from images shown.

*Customs
by MWW*

Let us help you create a great
Personal Design
just for you!



Perfect For Fund-raising
Or Corporate Gift Ideas:

- Towns & Cities
- Festivals
- High Schools
- Colleges
- Sports Teams
- Churches
- Family Reunions
- Business Gifts
- Employee Awards & Incentives



Custom Products
CAN MEAN PROFITS FOR YOUR STORE, SCHOOL,
OR ORGANIZATION... IT'S AS EASY AS 1,2,3.



All Customs by MWW products are Made in the USA.
All throws are 100% Cotton.



Emily goes Wild

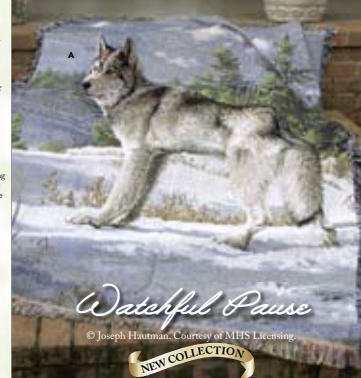


Manual Woodworkers & Weavers
3737 Howard Gap Road
Hendersonville, NC 28792
1-800-542-3139
www.manualww.com

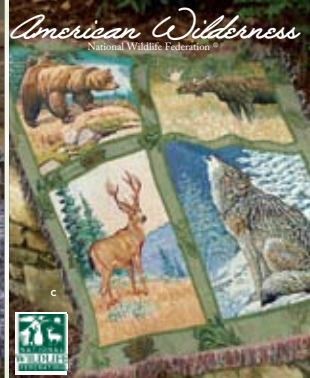
Emily Goes Wild
© Barbara Parham, L.P.
All Rights Reserved
Licensed by The Sewerds Group

A portion of the wholesale price for this collection is given to NWF in support of their mission to inspire Americans to protect wildlife for our children's future.

- A Tapestry Throw 31" x 68" 02-2202ATWATC
- B Wallhanging 26" x 36" 02-2000HWTWP
- C Throw 50" x 60" 02-2000HWTWPV
- D Bear Pillow 17" x 17" 02-1000TAWBE
- E Deer Pillow 17" x 17" 02-1000TAWDE
- F Moose Pillow 17" x 17" 02-1000TAWMOOS
- G Wolf Pillow 17" x 17" 02-1000TAWOLF
- H Wallhanging 26" x 36" 02-2000HWTAWD



Watchful Pause
© Joseph Hautman, Courtesy of MHS Licensing.



American Wilderness
National Wildlife Federation



The Great Outdoors

See care instructions on page 310.